

**Providing Quality Metal Roofing Products
And Innovative Supply Solutions**

PANEL SCREWS

**POWDER COATED HEADS
OVER DACROMET FINISH**



POWDER COAT ADVANTAGE

- More durable than wet painted
- Smooth, uniform finish
- Increased resistance to chipping/fading
- Color selection virtually unlimited



**HEX WASHER HEAD
TYPE-17 HI-LO THREAD
SELF- DRILL TEKS
W/EPDM SEALING WASHER**

**#10 X 1" #10 X 1-1/2"
#10 X 1-1/2" #12 X 1"
#10 X 2" #14 X 7/8"**

OTHER LENGTHS AVAILABLE FROM STOCK

COLORS AVAILABLE FROM STOCK

Ash Gray	Country Red
Black	Desert Sand
Bright Red	Fern Green
Burgundy	Forest Green
Burnished Slate	Galvalume
Charcoal Gray	Hawaiian Blue
Ivory	Regal Blue
Light Blue	Sahara Tan
Polar White	Tudor Brown

CUSTOM COLORS AVAILABLE



PIPE FLASHINGS



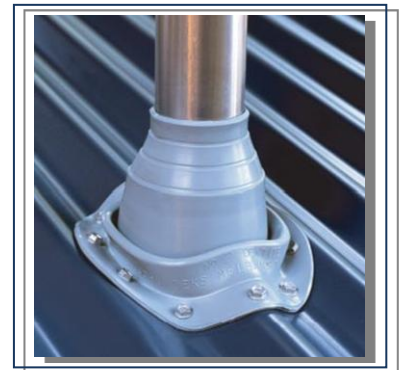
- Regular or Retro-fit styles available
- Available in EPDM rubber or silicone
- EPDM covers applications from -65F to +275F
- Silicone covers applications from -100F to +500F
- 11 different sizes to fit all pipes & vents up to 26"

REGULAR STYLE – ROUND (EPDM OR SILICONE)
MIN ORDER: 1 BOX

SIZE	PIPE O.D.	BOX QTY
MINI	1/4" – 1-1/8"	20
#1	1/4" – 2"	15
#2	1-3/4" – 3-1/4"	15
#3	1/4" – 5"	15
#4	3" – 6"	10
#5	4" – 7"	5
#6	5" – 9"	5
#7	6" – 11"	5
#8	7" – 13"	5
#9	10" – 18"	5
#10	13" – 26"	2

RETROFIT STYLE – ROUND (GRAY EPDM)
MIN ORDER: 1 BOX

SIZE	PIPE O.D.	BOX QTY
801	3/4" – 2-3/4"	10
802	2" – 7-1/4"	5
803	3-1/4" – 10"	5



CLOSURES

- Available in pre-cut strips to fit most profiles
- Dovetail connections on the most popular profiles
- Universal closure can be cut to fit all applications
- Available with or without adhesive backing

PRE-CUT STRIPS 36"
DOVETAIL CONNECTIONS
WITH ADHESIVE
MIN ORDER: 1 CARTON CARTON QTY: 100

"AG" PANEL
(Aka GRAND RIB / HI-RIB / MAX RIB)

"R" PANEL

UNIVERSAL CLOSURES WITH ADHESIVE
MIN ORDER: 1 CARTON CARTON QTY: 20

1" x 1" x 25' ROLL
1" x 1-1/2" x 25' ROLL

HI-ACRYLIC Metal Roof and Multi-Use Building Sealant Tapes

Product Uses

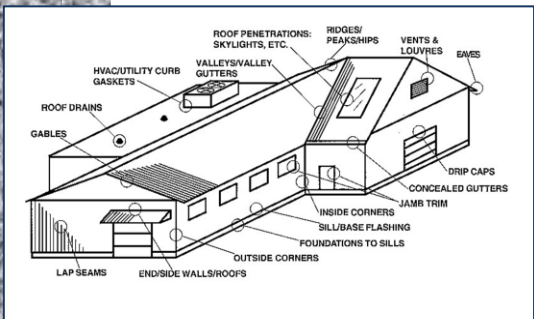
AST Sealant Tapes are used to seal out dust, air, wind-driven snow, and moisture through joint details in metal buildings and similar structures, both pre-manufactured and site-built. They are ideal as joint fillers in expansion/compression seals in joints that are subject to movement from thermal expansion and contraction of a structure, and as gasket-type seals in mechanically fastened, non-moving applications such as lap seams.



INNER CLOSURE STRIP



OUTER CLOSURE STRIP



ADDITIONAL PRODUCTS



S-M BUTLY TAPES

Tacky Tape® is a 100% solids asbestos-free butyl tape sealant that is a highly rubbery, tacky, reinforced compound designed for sealing metal lap joints in the metal building industry. It is easy to apply and compress during installation. It is available in various sizes supplied in ready-to-use rolls and pre-cut end lap pads for standing seam roof (SSR) applications.

(Also available in double and triple bead rolls and end lap pads)



NPC SOLAR SEAL 900 SEALANT

#900 SOLAR SEAL - Based on terpolymer elastomer technology, offers an alternative to silicone & urethane chemistry. Protect your investments with high performance terpolymer chemistry that impart exceptional weather resistance, adhesion, elongation and color stability to SOLAR SEAL.

Available in over 200 colors

BUBBLE REFLECTIVE INSULATION

The white polyethylene film is protected against UV rays
Aluminum – 2 layers of bubbles – White polyethylene
Thickness: 5/16" – 8mm

Sizes available:

- Widths: 48", 72", 96"
- Lengths: 62.5', 125'

Type: Square edge, 1" or 2" staple tab, 1" quick seam tape for faster installation.

**PANCAKE HEAD
STANDING SEAM CLIP SCREWS**



METAL ROOFING TOOLS

Specialized tools for roofing include tear-offs, power shears, edge rollers, power-assisted shears, and hole cutters for metal roofing and building panels.

STAINLESS STEEL RIVETS – PAINTED HEADS



410 Stainless
1/8 Diameter
Grip Range:
.126-.187

ABOUT OUR COMPANY

Circle Bolt & Nut Inc. has over 30 year's experience to the construction industry. We are an international supplier of fasteners, specialty hardware, and value added services. Since 1979, Circle has grown from one facility in Pittston, PA to national coverage through seven full service branches and other types of satellite warehouse & service locations. Our corporate headquarters is now located in Kingston, PA.

Circle Bolt & Nut is known for exceptional customer support through our dedicated employees throughout North America. Our employees have a vast level of technical expertise in Class C Hardware specifications, and supply management techniques. Total customer satisfaction is further achieved through adherence to our ISO 9001:2008 Quality Management System that is Applicable for Distribution of Commercial & Aerospace Fasteners, Sealants, Abrasives and Hardware.

As a premier supplier of a wide variety of parts and components, we are constantly expanding our product offering. We look forward to meeting your needs for standard fasteners to complex assemblies. We are confident that we can meet your product, service and cost expectations by providing ***the right part - at the right price - at the right time.***

Thank you for the opportunity to prove our value to your organization. Contact us at one of our full service branch locations.

**CORPORATE HEADQUARTERS & BRANCH LOCATION****Kingston, PA**

158 Pringle St
Kingston, PA 18704

Phone: 800-548-2658
Fax: 570-718-6019

OTHER DISTRIBUTION CENTERS**Atlanta, GA**

315 Shawnee North Drive – Suite 650
Suwanee, GA 30024
Phone: 678-546-7706
Fax: 678-546-7709

Portland, OR

19370 SW 90th Ct
Tualatin, OR 97062
Phone: 503-885-9077
Fax: 503-885-9807

Jackson, TN

123 Ragland Rd – Suite F5
Jackson, TN 38305
Phone: 731-668-2770
Fax: 731-669-2718

Oklahoma City, OK

4800 West Point Blvd.
Oklahoma City, OK 73179
Phone: 405-516-2281
Fax: 405-948-6207

Tupelo, MS

312 Whitaker Dr – Suite E
Tupelo, Ms 38804
Phone: 662-680-8881
Fax: 662-680-8883

Los Angeles, CA

9393 Arrow Hwy.
Rancho Cucamonga, CA 91730
Phone: 909-481-1068
Fax: 909-481-1975